



IRONRIDGE PRODUCT CATALOG

Effective May 2010





Introduction

Thank you for choosing IronRidge's PV mounting solutions. Use our online configurator and sizing charts to determine the IronRidge product best suited for your installation. The MSRP for each product can be found using our price lists.

Price and specifications are subject to change without notice. However, IronRidge strives to maintain open communication with all of our customers and partners. In most cases, we will communicate via email 30 days in advance of any part number or pricing changes. Please make sure your server is setup to receive e-mails from any address at ironridge.com.

IronRidge welcomes feedback concerning the accuracy and user-friendliness of this product catalog. Please send any suggestions to sales@ironridge.com.

Notes

- Please specify the make, model, and number of solar modules you are mounting when ordering. Some applications may require additional module kits beyond those supplied with the standard mount.
- Call IronRidge customer service at 707-459-9523 for questions on mounting solutions or volume discounts.
- Please note that third party products from Wiley Electronics, Oatey, and QuickMountPV are not eligible for discounting.

Table of Contents

ROOF MOUNTS

Rails	4
Splices	5
Clamps	5
L-feet	6
Standoffs	6
Tilt Legs	7
Grounding	7
Roof Mount Pricing	8
Black Anodize Pricing	9
Ontario Pricing	10
Sizing Charts	11

LARGE AREA ARRAYS (SGA)

Top Caps	13
Bracket Connectors	13
Diagonal Braces	14
SGA Pricing	15

POLE MOUNTS

Top of Pole	16
Side of Pole	16
Single Arm	16
Pole Mount Pricing	17

GROUND MOUNTS

Portrait Style	18
Landscape Style	18
Ground Mount Pricing	19

BATTERY RACKS & ENCLOSURES

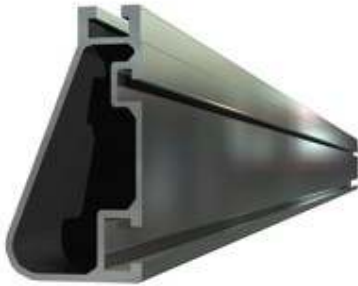
Small Enclosures for Group 27/31	20
Large Enclosures for Group 27/31	21
Pole Mount Kits	21
Racks & Enclosures for 8D	22
Battery Enclosure Pricing	23

Roof Mounts

The fastest and easiest way to determine which and how many IronRidge Roof Mount components are required for your specific installation is to use our online Roof Mount Designer on www.ironridge.com.



Rails



XRS (Standard) Rail

The XRS rail is our popular, best performing rail. Spanning over 12 feet under most load conditions, the XRS rail has slots for both top and bottom mounting. The XRS rail is manufactured using extruded anodized 6105-T5 aluminum.



XRL (Light) Rail

The XRL rail is our lightest, most cost-effective rail. Spanning over 6 feet under most load conditions, the XRL rail has a top slot for easy top-installation of clamps. The XRL rail is manufactured using extruded anodized 6105-T5 aluminum.

Splice Bars



Internal Splices

Both the XRS and XRL rails can be easily extended with our patent-pending internal splice bars. The internal splice bars provide flexibility in attachment location and the hidden bars offer a seamless appearance. Both XRS and XRL splices are made with extruded 6105-T5 aluminum.

Clamps



End Clamps

Top mounting clamps secure to the slots in the rails and are not dependent on module mounting holes. The end clamps require 1.5" on each end and vary in height depending on the module being mounted. Please use sizing charts or online configurator to determine the correct size of end clamp for your project.



Mid Clamps

Mid clamps are used when top mounting modules and are secure modules to the top slot of the XRS and XRL rails. The mid clamps require only .25" between modules, optimizing the number of modules that can be fit onto a single pair of rails.



Bottom Clamps

Bottom mounting clamps can be used when you wish to attach the modules to the rails prior to final installation. No additional space is required between modules or at the end of the rail.

L-Feet



Adjustable L-foot

The adjustable L-feet are strong enough for most applications. Vertical slots provide adjustability to account for roof irregularities. L-feet integrate easily with QuickMount and other roofing products. The L-feet are manufactured using 6105-T5 aluminum.

Standoffs



Aluminum Standoffs

Flat top two-piece aluminum standoffs are ideal for flush-mounted applications and are sized to integrate easily with Oatey flashings. These aluminum standoffs are available in four different heights ranging from 3" to 7".



Steel Standoffs

Flat top welded steel standoffs are ideal for tilt-mounted applications and are sized to integrate easily with Oatey flashings. The steel standoffs are available in three different heights ranging from 4" to 9".

Tilt Legs



Tilt Leg Kits

Tilt legs attach directly to either the XRL or XRS rails. The simple design provides adjustability in all 3 dimensions and a variety of lengths covers most angles. Each tilt leg kit comes with the shorter front leg, the longer rear leg, and all the necessary hardware. The tilt legs are manufactured using 6061-T6 aluminum.

Grounding



Grounding

Wiley grounding clips (WEEB DMC), grounding lugs, and bonding jumpers are all available. Order one grounding clip for every two top mounting clamps, one grounding lug for every rail segment, and one bonding jumper for every splice.

IronRidge Roof Mount Designer

We highly recommend using the online IronRidge Roof Mount Designer to calculate the exact part numbers and quantities required for your specific project. In addition to providing material configuration support, the Roof Mount Designer provides engineering data based on your project's load conditions. The IronRidge Roof Mount Designer can be found on www.ironridge.com. The sizing instructions that follow will explain how to manually calculate quantities and sizes if desired.

Rail Sizing

When top mounting panels, the lengths of XRL or XRS rail required for each row can be calculated by multiplying the quantity of modules in a row by the module's width. Add to this a quarter inch space between each module, and 2 inches to each end for total rail length needed for that row.

For example, to mount five modules that are each 40" wide, the calculations are as follows:

- $5 \times 40" = 200"$ (account for width of modules in portrait mode)
- $4 \times .25" = 1"$ (account for width of mid-clamps between the five modules)
- $2 \times 1.5" = 3"$ (account for two end clamps on ends of rail)
- $200" + 1" + 3" = 204"$ (total length of one rail)

Two 18' rails will be required to mount these five modules (closest stocked rail length to 204" is 18 feet)

Panel Clamp Sizing

Panel clamps depend on the module thickness. Match the clamp type with the module thickness and order the corresponding end clamp and mid clamp part numbers.

Module Thickness		Clamp Type	Part Numbers	
mm	Inches		End Clamp	Mid Clamp
33-35	1.31–1.37	A	29-7000-134	29-7000-105
35-37	1.38–1.44	B	29-7000-224	29-7000-105
39-41	1.54–1.60	C	29-7000-157	29-7000-101
40-42	1.57–1.63	D	29-7000-160	29-7000-101
42-44	1.68–1.74	E	29-7000-171	29-7000-101
45-47	1.78–1.84	F	29-7000-214	29-7000-108
49-51	1.94–2.00	G	29-7000-204	29-7000-108
57-59	2.27–2.33	H	29-7000-230	29-7000-104

Attachment Quantities

The quantity of L-feet or tilt legs is typically defined by the spacing of the purlins or rafters. Maximum allowable distances between attachments vary depending upon load conditions and are provided with the XRS and XRL certification letters and span charts.

Tilt Leg Sizing Chart

Tilt angles depend on the module length and the leg length. Each leg will support a range of tilt angles, depending on where the rails are attached to the module. The IronRidge tilt leg kits will work with both XRL and XRS rail systems and do not require L-feet to be ordered separately.

Module Length	Tilt Leg Part Numbers					
	51-7210-010	51-7210-015	51-7210-020	51-7210-025	51-7210-030	51-7210-040
47.0"	5 – 8°	11 – 18°	17 – 26°	22 – 34°	27 – 40°	36 – 50°
52.1"	4 – 7°	10 – 16°	15 – 24°	20 – 31°	25 – 37°	33 – 47°
59.4"	4 – 6°	9 – 14°	13 – 21°	18 – 28°	22 – 34°	30 – 43°
62.8"	4 – 6°	8 – 13°	13 – 20°	17 – 27°	21 – 32°	29 – 42°
63.8"	4 – 6°	8 – 13°	13 – 20°	17 – 26°	21 – 32°	28 – 41°
64.5"	4 – 6°	8 – 13°	12 – 20°	17 – 26°	21 – 32°	28 – 41°
65.9"	4 – 6°	8 – 13°	12 – 20°	16 – 26°	20 – 31°	27 – 41°
71.3"	3 – 5°	7 – 12°	11 – 18°	15 – 24°	19 – 29°	26 – 38°
77.6"	3 – 5°	7 – 11°	10 – 16°	14 – 22°	17 – 27°	24 – 36°

Roof Mounts Pricing

Part Number	Description	Quantity	MSRP
Rails			
51-7000-144A	XRS, Rail 144" (12 Feet) Clear	1	\$86.40
51-7000-168A	XRS, Rail 168" (14 Feet) Clear	1	\$100.80
51-7000-192A	XRS, Rail 192" (16 Feet) Clear	1	\$115.20
51-7000-216A	XRS, Rail 216" (18 Feet) Clear	1	\$129.60
51-6000-144A	XRL, Rail 144" (12 Feet) Clear	1	\$55.20
51-6000-168A	XRL, Rail 168" (14 Feet) Clear	1	\$64.40
51-6000-192A	XRL, Rail 192" (16 Feet) Clear	1	\$73.60
51-7000-216A	XRL, Rail 216" (18 Feet) Clear	1	\$82.80
Splices			
29-7000-010	Splice, XRS, Mill (1)	1	\$10.50
29-7000-000	Splice, XRL, Mill (1)	1	\$9.50
Attachments & Flashings			
29-7000-017	Kit, Adjustable L-Foot, Mill	4	\$22.00
51-6003-500L	Standoff 3", Flush Mount, Mill	1	\$14.00
51-6004-500L	Standoff 4", Flush Mount, Mill	1	\$15.00
51-6006-500L	Standoff 6", Flush Mount, Mill	1	\$17.00
51-6007-500L	Standoff 7", Flush Mount, Mill	1	\$18.00
51-4004-00T	Standoff 4", Tilt Mount, Steel	1	\$31.00
51-4006-00T	Standoff 6", Tilt Mount, Steel	1	\$32.00
51-4009-00T	Standoff 9", Tilt Mount, Steel	1	\$34.00
31-1000-000	Flashing, QuickMount 12 Pack	12	\$252.00
31-1000-001	Flashing, Oatey 12 Pack	12	\$60.00
Tilt Legs			
51-7210-010	Tilt Leg Kit, 10", Mill	1	\$39.00
51-7215-015	Tilt Leg Kit, 15", Mill	1	\$41.50
51-7220-020	Tilt Leg Kit, 20", Mill	1	\$44.00
51-7225-025	Tilt Leg Kit, 25", Mill	1	\$46.50
51-7230-030	Tilt Leg Kit, 30", Mill	1	\$49.00
51-7240-040	Tilt Leg Kit, 40", Mill	1	\$54.00
Clamps			
29-7000-134	Kit, End Clamp A 1.34", Mill	4	\$14.00
29-7000-224	Kit, End Clamp B 1.41", Mill	4	\$14.00
29-7000-157	Kit, End Clamp C 1.57", Mill	4	\$14.00
29-7000-160	Kit, End Clamp D 1.60", Mill	4	\$14.00
29-7000-171	Kit, End Clamp E 1.71", Mill	4	\$14.00
29-7000-214	Kit, End Clamp F 1.81", Mill	4	\$14.00
29-7000-204	Kit, End Clamp G 1.97", Mill	4	\$14.00
29-7000-230	Kit, End Clamp H 2.30", Mill	4	\$14.00
29-7000-105	Kit, Mid Clamp A-B 2.00", Mill	4	\$10.00
29-7000-101	Kit, Mid Clamp C-E 2.25", Mill	4	\$10.00
29-7000-108	Kit, Mid Clamp F-G 2.50", Mill	4	\$10.00
29-7000-104	Kit, Mid Clamp H 2.75", Mill	4	\$10.00
29-7000-117	Kit, Under Clamp, Clear	4	\$10.50
Grounding			
29-4000-001	WEEB DMC Compression Clip	100	\$100.00
29-4000-002	WEEB Grounding Lug	100	\$450.00
29-4000-003	WEEB Bonding Jumper	100	\$650.00
29-4000-006	WEEB ACC-PV Wire Clip	100	\$45.00

Roof Mounts Pricing (Black Anodization)

Part Number	Description	Quantity	MSRP
Rails			
51-7000-144B	XRS, Rail 144" (12 Feet) Black	80	\$8,256.00
51-7000-168B	XRS, Rail 168" (14 Feet) Black	80	\$9,632.00
51-7000-192B	XRS, Rail 192" (16 Feet) Black	80	\$11,008.00
51-7000-216B	XRS, Rail 216" (18 Feet) Black	80	\$12,384.00
51-6000-144B	XRL, Rail 144" (12 Feet) Black	80	\$5,280.00
51-6000-168B	XRL, Rail 168" (14 Feet) Black	80	\$6,160.00
51-6000-192B	XRL, Rail 192" (16 Feet) Black	80	\$7,040.00
51-6000-216B	XRL, Rail 216" (18 Feet) Black	80	\$7,920.00
Attachments & Flashings			
29-7777-017B	Bulk, Adjustable L-Foot, Black	100	\$900.00
Clamps			
29-7777-134B	Bulk, End Clamp A (1.34"), Black	100	\$400.00
29-7777-224B	Bulk, End Clamp B (1.41"), Black	100	\$400.00
29-7777-157B	Bulk, End Clamp C (1.57"), Black	100	\$400.00
29-7777-160B	Bulk, End Clamp D (1.60"), Black	100	\$400.00
29-7777-171B	Bulk, End Clamp E (1.71"), Black	100	\$400.00
29-7777-214B	Bulk, End Clamp F (1.81"), Black	100	\$400.00
29-7777-204B	Bulk, End Clamp G (1.97"), Black	100	\$400.00
29-7777-230B	Bulk, End Clamp H (2.30"), Black	100	\$400.00
29-7777-105B	Bulk, Mid Clamp A-B (2.0"), Black	200	\$800.00
29-7777-101B	Bulk, Mid Clamp C-E (2.25"), Black	200	\$800.00
29-7777-108B	Bulk, Mid Clamp F-G (2.5"), Black	200	\$800.00
29-7777-104B	Bulk, Mid Clamp H (2.75"), Black	200	\$800.00

Notes:

- 1) Black anodized rails are sold only in quantities of 80 rails and there is a 2000 lb minimum order
- 2) Black adjustable l-feet are sold in quantities of 100 and are bagged in kits of 4 (25 kits to a box).
- 3) Black anodized end clamps are sold in quantities of 100 and are bagged in kits of 4 (25 kits to a box)
- 4) Black anodized mid clamps are sold in quantities of 200 and are bagged in kits of 4 (50 kits to a box)

Large Area Arrays (SGA)

The IronRidge SGA supports 2" and 3" schedule 40 pipe to reduce shipping costs by allowing standard pipe sizes to be sourced locally.

The fastest and easiest way to determine which and how many IronRidge SGA components are required for your specific installation is to use our online Large Area Array Designer on www.ironridge.com.



SGA Top Caps



Top Caps

The heavy duty cast steel top caps secure quickly and easily to the schedule 40 pipe with 3 set screws. Available in 2" and 3" sizes, the top cap also supports the cross-rails on top with simple u-bolts. The top caps are manufactured using cast steel ASTM A216. Schedule 40 pipe not included.

Rail Connectors



Rail Connectors

The rail connectors secure the XRS rails to the cross pipes. Each XRS rail requires two connectors to create a secure attachment. Available for both 2" and 3" sizes, the rail connectors are manufactured using extruded aluminum 6105-T5.

Brace Assembly



Brace Sleeve (optional)

The cast steel brace sleeves slip easily to the schedule 40 pipe with 3 set screws. Available in 2" and 3" sizes, the brace sleeve secures the diagonal brace to the pier. Each brace assembly contains two brace sleeves – one for each pier. The brace sleeves are manufactured using cast steel ASTM A216.



Diagonal Braces (optional)

When additional stability is required, diagonal braces can be attached to the brace sleeves between North and South piers. Each brace assembly contains one diagonal brace that connects between the piers using the above brace sleeve. The diagonal braces are manufactured using extruded aluminum 6061-T6.

SGA Pricing

Part Number	Description	Quantity	MSRP
Top Caps			
70-0277-SGA	SGA Top Cap 2" (kitted)	4	\$220.00
70-0377-SGA	SGA Top Cap 3" (kitted)	4	\$280.00
70-0200-SGA	SGA Top Cap 2" (bulk)	1	\$55.00
70-0300-SGA	SGA Top Cap 3" (bulk)	1	\$70.00
Rail Connectors			
29-7701-001	SGA XRS Rail Connector 2" (kitted)	12	\$240.00
29-7701-000	SGA XRS Rail Connector 3" (kitted)	12	\$240.00
29-7001-001	SGA XRS Rail Connector 2" (bulk)	1	\$20.00
29-7001-000	SGA XRS Rail Connector 3" (bulk)	1	\$20.00
Brace Assemblies			
70-0277-CBR	SGA 2" (7.5') Brace Assembly (kitted)	4	\$800.00
70-0377-CBR	SGA 3" (7.5') Brace Assembly (kitted)	4	\$960.00
70-0200-CBR	SGA 2" (7.5') Brace Assembly (bulk)	1	\$200.00
70-0300-CBR	SGA 3" (7.5') Brace Assembly (bulk)	1	\$240.00
Rails			
51-6000-144A	XRL Rail at 144" (12 Feet), Clear	1	\$55.20
51-7000-168A	XRS Rail at 168" (14 Feet), Clear	1	\$100.80
Clamps			
29-7000-134	Kit, End Clamp (A) 1.34", Mill	4	\$14.00
29-7000-224	Kit, End Clamp (B) 1.41", Mill	4	\$14.00
29-7000-157	Kit, End Clamp (C) 1.57", Mill	4	\$14.00
29-7000-160	Kit, End Clamp (D) 1.60", Mill	4	\$14.00
29-7000-204	Kit, End Clamp (E) 1.71", Mill	4	\$14.00
29-7000-214	Kit, End Clamp (F) 1.81", Mill	4	\$14.00
29-7000-204	Kit, End Clamp (G) 1.97", Mill	4	\$14.00
29-7000-230	Kit, End Clamp (H) 2.3", Mill	4	\$14.00
29-7000-105	Kit, Mid Clamp (A-B) 2.0", Mill	4	\$10.00
29-7000-101	Kit, Mid Clamp (C-E) 2.25", Mill	4	\$10.00
29-7000-108	Kit, Mid Clamp (F-G) 2.5", Mill	4	\$10.00
29-7000-104	Kit, Mid Clamp (H) 2.75", Mill	4	\$10.00
29-7000-117	Kit, Under Clamp, Clear	4	\$9.00
Grounding			
29-4000-001	WEEB Compression Clip	100	\$100.00
29-4000-002	WEEB Grounding Lug	100	\$450.00
29-4000-006	WEEB ACC-PV Wire Clip	100	\$45.00

Notes:

- 1) SGA components are available in bulk or kitted packaging. Please note description and use appropriate part number when ordering.

Pole Mounts

IronRidge offers a variety of pole mounts including products for top of pole, side of pole, and single arm applications. Each of these products comes in a variety of sizes including support for different pole sizes and quantity of modules.

Please use our online configurator or speak with your local distributor to determine the correct pole mount product for your specific installation.



Pole Mounts



Top of Pole Mounts

The TP mounts are a heavy duty mounting solution for small area PV needs. They support pole diameters of 4 to 6 inches and modules from most manufacturers. Top of Pole mounts are manufactured using hot rolled steel and heavy-duty corrosion-resistant 5052-H32 aluminum.



Side of Pole Mounts

The SP mounts are a simple mounting solution for small area PV needs. They support pole diameters of 2 to 4.5 inches and support modules with center-center distribution of 19 to 39 inches. Side of Pole mounts are manufactured using heavy-duty corrosion-resistant 5052-H32 aluminum.



Single Arm Mounts

The Single Arm mount is a simple mounting solution for poles or walls and other flat surfaces. The SA mounts support poles of 2 to 3 inches and module widths between 5.26 and 25.5 inches. Single Arm mounts are manufactured using heavy-duty corrosion-resistant 5052-H32 aluminum.

Pole Mounts Pricing

Part Number	Description	Qty	MSRP
Top of Pole Mounts			
UNI-TP/02	Pole Top Single Row 45"	1	\$325.00
UNI-TP/02A	Pole Top Single Row 55"	1	\$335.00
UNI-TP/03	Pole Top Single Row 70"	1	\$370.00
UNI-TP/04	Pole Top Single Row 90"	1	\$410.00
UNI-TP/04A	Pole Top Single Row 110"	1	\$460.00
UNI-TP/06	Pole Top, Dual Row 70"	1	\$790.00
UNI-TP/06LL	Pole Top, Dual Row 70"	1	\$850.00
UNI-TP/08	Pole Top, Dual Row 90"	1	\$875.00
UNI-TP/8LL	Pole Top, Dual Row 90"	1	\$950.00
UNI-TP/10	Pole Top, Dual Row 115"	1	\$1,005.00
UNI-TP/10LL	Pole Top, Dual Row 115"	1	\$1,300.00
UNI-TP/12	Pole Top, Dual Row 140"	1	\$1,350.00
UNI-TP/12LL	Pole Top, Dual Row 140"	1	\$1,380.00
Side of Pole Mounts			
UNI-SA/14.0	Single Arm, Side Pole 14"	1	\$60.00
UNI-SA/21.5	Single Arm, Side Pole 21.5"	1	\$68.00
UNI-SA/26.0	Single Arm, Side Pole 26"	1	\$75.00
UNI-SP/01	Side Pole Mount 25"	1	\$106.00
UNI-SP/01A	Side Pole Mount 27.5"	1	\$110.00
UNI-SP/01XH	Side Pole Mount 27.5"	1	\$150.00
UNI-SP/01XX	Side Pole Mount 30"	1	\$250.00
UNI-SP/02	Side Pole Mount 45"	1	\$228.00
UNI-SP/02A	Side Pole Mount 55"	1	\$239.00
UNI-SP/02X	Side Pole Mount 55"	1	\$275.00
UNI-SP/03	Side Pole Mount 70"	1	\$295.00
Single Arm Mounts			
UNI-SA/14.0	Single Arm, Side Pole 14"	1	\$60.00
UNI-SA/21.5	Single Arm, Side Pole 21.5"	1	\$68.00
UNI-SA/26.0	Single Arm, Side Pole 26"	1	\$75.00
Grounding			
29-4000-005	WEEB 9.5NL Grounding Clip	100	\$150.00

Ground Mounts

IronRidge ground mounts come with adjustable, telescoping legs, and a space-efficient design to maximize output of the land or space available.

All ground mount products have minimal part counts and are manufactured using corrosion-resistant 5052-H23 aluminum.



Ground Mounts



Portrait Style

Portrait style ground mounts orient the panels in portrait mode (long side up). The portrait style ground mounts can be tilted up to 65 degrees in angle. The longest horizontal width for a single ground mount is 27 feet, but multiple ground mounts can be extended indefinitely.



Landscape Style (High Tilt)

Landscape style ground mounts orient the modules in landscape mode (short side up). Multiple rows of modules of up to 90 inches can be stacked on top of each other.

Ground Mounts Pricing

Part Number	Description	Qty	MSRP
Ground Mounts			
UNI-GR/01	Ground Mount 25", Landscape	1	\$85.00
UNI-GR/01A	Ground Mount 27.5", Landscape	1	\$85.00
UNI-GR/02	Ground Mount 45", Landscape	1	\$135.00
UNI-GR/02A	Ground Mount 55", Landscape	1	\$145.00
UNI-GR/03	Ground Mount 70", Landscape	1	\$274.00
UNI-GR/04	Ground Mount 90", Landscape	1	\$305.00
UNI-GR/04H	Ground Mount 90", Portrait	1	\$320.00
UNI-GR/04AH	Ground Mount 110", Portrait	1	\$400.00
UNI-GR/06H	Ground Mount 140", Portrait	1	\$480.00
UNI-GR06AH	Ground Mount 160", Portrait	1	\$460.00
UNI-GR/08H	Ground Mount 180", Portrait	1	\$585.00
UNI-GR/10H	Ground Mount 225", Portrait	1	\$695.00
UNI-GR/12H	Ground Mount 270", Portrait	1	\$795.00
UNI-GR/14H	Ground Mount 325", Portrait	1	\$995.00
Grounding			
29-4000-005	WEEB 9.5NL Grounding Clip	100	\$150.00

Battery Racks & Enclosures

IronRidge offers a variety of battery racks and enclosures for off-grid battery storage applications. These products come in different sizes and support the most common types of batteries.

All IronRidge battery racks and enclosures are constructed using aluminum with white powder coat finish and stainless steel hardware and latches.



Small Enclosures for Group 27/31 Batteries



Econobox

The Econobox comes with an easy slide-off cover and can store a single Group 27/31 battery. The Econobox can easily be mounted on a pole using the optional pole mount kit (see below).



LCF01

The LCF01 holds a single Group 27/31 battery. This style enclosure also has a removable control panel, full-length piano hinges, and a stainless steel pad-lockable compression latch. The LCF01 uses passive ventilation and is NEMA 3R equivalent.



LCF02

The LCF02 holds two Group 27/31 batteries. This style enclosure also has a removable control panel, full-length piano hinges, and a stainless steel pad-lockable compression latch. The LCF02 uses passive ventilation and is NEMA 3R equivalent.

Large Enclosures for Group 27/31 Batteries



1624-BE04A

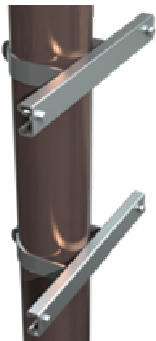
The 1624-BE04A, which can hold 4 Group 27/31 batteries, has removable control panels, full length piano hinges, and stainless steel tumbler style latches. This enclosure has removable doors and trays, passive ventilation, and is NEMA 3R equivalent.



OES-431

Like the 1624-BE04A, the OES-431 can hold 4 Group 27/31 batteries. This enclosure also has a removable door and control panels. In addition, the stainless steel compression latch is pad-lockable for extra security. The OES-431 has passive ventilation and is NEMA 3R equivalent.

Enclosure Pole Mount Kit



Enclosure Pole Mount Kit

The Enclosure Pole Mount Kit is an optional accessory that can mount any of the Group 27/31 battery enclosures including the Econobox, LCF01A, LCF02A, 1624-BE04A, and the OES-431.

The kit is available for 2", 3", 4", and 6" nominal pipe sizes.

Enclosures & Racks for 8D Batteries



BEE Series Enclosures

The BEE Series Enclosures hold quantities of 2–6 Group 8D batteries. These enclosures can be either shelf or floor mounted and provide electrical knockouts in convenient locations. All BEE Series Enclosures come standard with passive ventilation and are NEMA 3R equivalent.



Knock Down Battery Rack (KDR)

The KDR (Knock Down Battery Rack) is an open-air rack solution for storing up to 8 8D batteries. This floor-mounted unit has an optional cover kit available and is packaged unassembled for lowered shipping costs. The KDR-88D and KDR-88D Cover Kit are designed for use indoors. Please note if exposed to the elements during normal use, the KDR-88D and KDR-88D Cover Kit will no longer have their finishes covered by warranty.

Battery Enclosures & Racks Pricing

Part Number	Name	Description	Dimensions	MSRP(1+)	MSRP(5+)	MSRP(10+)
Enclosures						
55-2501-010	Econobox	Holds 1 Group 27/31 Battery	8 x 14 x 12	\$125.00	\$125.00	\$125.00
55-0100-100	LCF-01A	Holds 1 Group 27/31 Battery	8 x 15 x 17	\$250.00	\$250.00	\$250.00
55-0100-102	LCF-02A	Holds 2 Group 27/31 Batteries	14.5 x 16 x 20	\$300.00	\$300.00	\$300.00
55-2003-431	OES-431	Holds 4 Group 27/31 Battery	14.5 x 16 x 32	\$1200.00	\$650.00	\$575.00
55-1624-421	1624BE-04A	Holds 4 Group 27/31 Batteries	14.5 x 16 x 37	\$1625.00	\$1100.00	\$1000.00
55-2700-200	BEE8D-02A	Holds 2 Group 8D Batteries	24 x 25 x 14	\$750.00	\$350.00	\$275.00
55-2700-410	BEE8D-04A	Holds 4 Group 8D Batteries	24 x 48 x 14	\$875.00	\$500.00	\$450.00
55-2700-600	BEE8D-06A	Holds 6 Group 8D Batteries	24 x 70 x 14	\$1000.00	\$625.00	\$575.00
Battery Racks						
57-0880-010	KDR-88D	Holds 8 8D Batteries	22 x 46 x18	\$825.00	\$550.00	\$525.00
57-2008-010	88D Cover	Optional cover kit for KDR-88D	22 x 46 x18	\$475.00	\$400.00	\$375.00
Pole Mount Kits						
29-5010-115	PMK-2	Mounts Enclosure on 2" Pole	2" clamp	\$70.00	\$70.00	\$70.00
29-5010-116	PMK-3	Mounts Enclosure on 3" Pole	3" clamp	\$70.00	\$70.00	\$70.00
29-5010-117	PMK-4	Mounts Enclosure on 4" Pole	4" clamp	\$70.00	\$70.00	\$70.00
29-5010-118	PMK-6	Mounts Enclosure on 6" Pole	6" clamp	\$70.00	\$70.00	\$70.00

IRONRIDGE PRODUCT CATALOG

Effective May 2010



291 Shell Lane • Willits, CA • 95490 • USA

Tel: 707-459-9523 • Fax: 707-459-1833 • www.ironridge.com